



PINENE ALPHA

PINE, CAMPHORACEOUS, SAPPY-GREEN WOOD, EARTHY

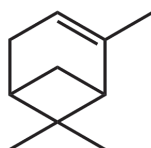
BIOBASED 100%

APPLICATION INFORMATION

For use in flavor, fragrance and in essential oil imitations.

CHEMICAL STRUCTURE

2,6,6-Trimethylbicyclo[3.1.1]hept-2-ene



Chemical formula - C₁₀H₁₆

SYNONYM

Pin-2(3)-ene

TENACITY ON BLOTTER

> 02

00

00

HOURS

DAYS

WEEKS

BLOOM DIFFUSIVITY



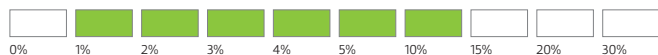
POOR

FAIR

GOOD

VERY

TYPICAL USE LEVEL



OCCURENCE IN NATURE

Found in turpentine and present in many essential oils. Extracted from the leaves, bark and wood.

TYPICAL PHYSICAL PROPERTIES

| | |
|--|---------------------------------|
| - Flash Point °C | 32 °C |
| - [α] _D ²⁰ minimum | - |
| - GC | 97% min. as Pinene alpha |
| - Appearance | Colorless to pale yellow liquid |
| - CAS No. | 80-56-8 |
| - M.W. | 136.24 |
| - FEMA / GRAS No. | 2902 |
| - Food Grade Cert. | YES |
| - CLogP | 4.27 |
| - Vapor Pressure | 536 Pa at 25°C |

PROPERTIES

| | STABILITY | POOR | FAIR | GOOD |
|---------------------------------|---------------|------|------|------|
| - Hypochlorite bleach | | ● | | |
| - Perborate Powder Detergent | | ● | | |
| - Liquid Detergent | | | | ● |
| - Concentrated Fabric Softeners | | | | ● |
| - Soaps | | | | ● |
| - Alcoholic fine fragrances | | | | ● |
| - Toiletry Applications | | | ● | |
| - Antiperspirants | | | ● | |
| | SUBSTANTIVITY | POOR | FAIR | GOOD |
| - Skin | | ● | | |
| - Dry Fabric | | ● | | |
| - Wet Fabric | | ● | | |
| - Hair | | ● | | |