



METHYL DIOXOLAN

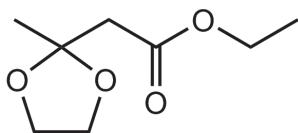
FRUITY, APPLE, JASMINE, MELON

APPLICATION INFORMATION

Most often incorporated into fruity-floral creations for soaps, detergents and toiletries. Gives a fragrance body and tenacity.

CHEMICAL STRUCTURE

Ethyl 2-(2-methyl-1,3-dioxolan-2-yl)acetate



Chemical formula - $C_8H_{14}O_4$

SYNONYM

Ethyl 2-methyl-1,3-dioxolane-2-acetate

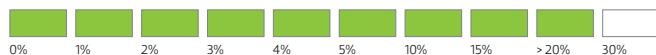
TENACITY ON BLOTTER

> 12 00 00
HOURS DAYS WEEKS

BLOOM DIFFUSIVITY

● ● ● ○
POOR FAIR GOOD VERY

TYPICAL USE LEVEL



OCCURENCE IN NATURE

Not found in nature.

TYPICAL PHYSICAL PROPERTIES

- Flash Point °C	92 °C
- $[\alpha]_D^{20}$ minimum	-
- GC	99% min. as Methyl Dioxolan
- Appearance	Colorless to pale yellow liquid
- CAS No.	6413-10-1
- M.W.	174.20
- FEMA / GRAS No.	4477
- Food Grade Cert.	YES
- CLogP	1.30
- Vapor Pressure	18.100 Pa at 25°C

PROPERTIES

	STABILITY	POOR	FAIR	GOOD
- Hypochlorite bleach		●		
- Perborate Powder Detergent		●		
- Liquid Detergent			●	
- Concentrated Fabric Softeners				●
- Soaps			●	
- Alcoholic fine fragrances				●
- Toiletry Applications				●
- Antiperspirants		●		
	SUBSTANTIVITY	POOR	FAIR	GOOD
- Skin		●		
- Dry Fabric		●		
- Wet Fabric				●
- Hair		●		