



MATSUTAKE ACETATE

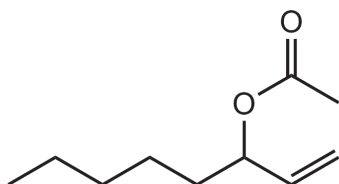
HERBAL, FRUITY, MINT, FLORAL

APPLICATION INFORMATION

Used in herbal-lavender fragrances, and in green and floral-violet accords. Also used in mushroom flavor applications.

CHEMICAL STRUCTURE

Oct-1-en-3-yl acetate



Chemical formula - C₁₀H₁₈O₂

SYNONYM

Amyl vinyl carbinyl acetate, 3-Acetoxy-1-octene

TENACITY ON BLOTTER

> 24 00 00
HOURS DAYS WEEKS

BLOOM DIFFUSIVITY

● ● ● ○
POOR FAIR GOOD VERY

TYPICAL USE LEVEL



OCCURENCE IN NATURE

Found in peppermint, spearmint and lavender.

TYPICAL PHYSICAL PROPERTIES

- Flash Point °C	65 °C
- [α] _D ²⁰ minimum	-
- GC	96% min. as 3-Acetoxy-1-octene
- Appearance	Colorless to pale yellow liquid
- CAS No.	2442-10-6
- M.W.	170.25
- FEMA / GRAS No.	3582
- Food Grade Cert.	YES
- CLogP	3.60
- Vapor Pressure	54.900 Pa at 25°C

ODOR TYPE - HERBACEOUS

PROPERTIES

	POOR	FAIR	GOOD
STABILITY			
- Hypochlorite bleach	●		
- Perborate Powder Detergent		●	
- Liquid Detergent			●
- Concentrated Fabric Softeners			●
- Soaps		●	
- Alcoholic fine fragrances			●
- Toiletry Applications		●	
- Antiperspirants		●	
SUBSTANTIVITY			
- Skin		●	
- Dry Fabric		●	
- Wet Fabric		●	
- Hair		●	