



CYCLOHEXYL LACTONE

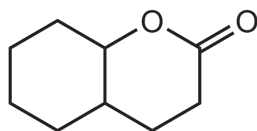
HERBAL, SWEET, NUTTY, WOODY

APPLICATION INFORMATION

Gives body to fruity-floral compositions. May be used in combination with coumarin and also with powdery notes.

CHEMICAL STRUCTURE

Octahydro-2H-chromen-2-one



Chemical formula - C₉H₁₄O₂

SYNONYM

Octahydro-2H-1-benzopyran-2-one

TENACITY ON BLOTTER

00

HOURS

00

DAYS

> 01

WEEKS

BLOOM DIFFUSIVITY



POOR



FAIR



GOOD



VERY

TYPICAL USE LEVEL



OCCURENCE IN NATURE

Not found in nature.

TYPICAL PHYSICAL PROPERTIES

- Flash Point °C	152 °C
- [α] _D ²⁰ minimum	-
- GC	98% min. as Cyclohexyl Lactone
- Appearance	Colorless clear liquid
- CAS No.	4430-31-3
- M.W.	154.21
- FEMA / GRAS No.	3791
- Food Grade Cert.	YES
- CLogP	1.55
- Vapor Pressure	1.140 Pa at 25°C

PROPERTIES

	STABILITY	POOR	FAIR	GOOD
- Hypochlorite bleach		●		
- Perborate Powder Detergent				●
- Liquid Detergent			●	
- Concentrated Fabric Softeners				●
- Soaps				●
- Alcoholic fine fragrances				●
- Toiletry Applications				●
- Antiperspirants			●	

	SUBSTANTIVITY	POOR	FAIR	GOOD
- Skin		●		
- Dry Fabric		●		
- Wet Fabric		●		
- Hair		●		