

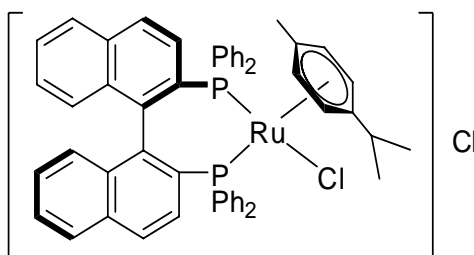
# Tech Note

**[RuCl(*p*-cymene)((*R*)-binap)]Cl**  
**Chloro[(*R*)-(+)-2,2'-bis(diphenylphosphino)-1,1'-binaphthyl]**  
**(*p*-cymene)ruthenium(II) chloride**

---

<b>CAS Number</b>	<b>145926-28-9</b>
<b>CASName</b>	<b>Ruthenium(1+), [(1<i>R</i>)-(1,1'-binaphthalene)-2,2'-diylbis(diphenylphosphine-κP)]chloro[(1,2,3,4,5,6-η)-1-methyl-4-(1-methylethyl)benzene]-, chloride</b>
<b>Formula</b>	<b>C<sub>54</sub>H<sub>46</sub>Cl<sub>2</sub>P<sub>2</sub>Ru</b>
<b>Molecular Weight</b>	<b>928.91</b>

---



---

### Representative References:

- Noyori, R. Ikeda, T. Ohkuma, T. Widhalm, M. Kitamura, M. Takaya, H. Akutagawa, S. Sayo, N. Saito, T. Taketomi, T. Kumobayashi, H. *J. Am. Chem. Soc.*, **1989**, *111*, 9134.
- Mashima, K. Kusano, K. Ohta, T. Noyori, R. Takaya, H. *J. Chem. Soc., Chem. Commun.*, **1989**, 1208.
- Kitamura M., Ohkuma, T. Tokunaga, M. Noyori, R. *Tetrahedron:Asymmetry* **1990**, *1*, 1.
- Mashima, K. Matsumura, Y. Kusano, K. Kumobayashi, H. Sayo, N. Hori, Y. Ishizaki, T. Akutagawa, S. Takaya, H. *J. Chem. Soc., Chem. Commun.*, **1991**, 609.
- Ohta, T. Miyake, T. Takaya, H. *J. Chem. Soc., Chem. Commun.*, **1992**, 1725.
- Ohta, T. Miyake, T. Seido, N. Kumobayashi, H. Akutagawa. S. Takaya, H. *Tetrahedron Lett.*, **1992**, *33*, 635.
- Mashima, K. Kusano, K. Sato, N. Matsumura, Y. Nozaki, K. Kumobayashi, H. Sayo, N. Hori, Y. Ishizaki, T. Akutagawa, S. Takaya, H. *J. Org. Chem.*, **1994**, *59*, 3064.
- Ohta, T. Miyake, T. Seido, N. Kumobayashi, H. Takaya, H. *J. Org. Chem.*, **1995**, *66*, 357.
- 



[finechemicals@takasago.com](mailto:finechemicals@takasago.com)