

# Tech Note

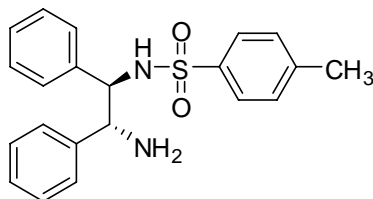
## (R,R)-TsDPEN

### (1R,2R)-(-)-N-(4-Toluenesulfonyl)-1,2-diphenylethylenediamine

---

CAS Number	144222-34-4
CASName	(1R,2R)-(-)-N-(4-Toluenesulfonyl)-1,2-diphenylethylenediamine
Formula	C <sub>21</sub> H <sub>22</sub> N <sub>2</sub> O <sub>2</sub> S
Molecular Weight	366.48

---



---

#### Suggested Applications:

---

#### Performance Examples and References:

Hashiguchi, S. Fujii, A. Takehara, J. Ikariya, T. Noyori, R. *J. Am. Chem. Soc.*, 1995, 117, 7562.

Uematsu, N. Fujii, A. Hashiguchi, S. Ikariya, T. Noyori, R. *J. Am. Chem. Soc.*, 1996, 118, 4916.

Matsumura, K. Hashiguchi, S. Ikariya, T. Noyori, R. *J. Am. Chem. Soc.*, 1997, 119, 8738.



[finechemicals@takasago.com](mailto:finechemicals@takasago.com)